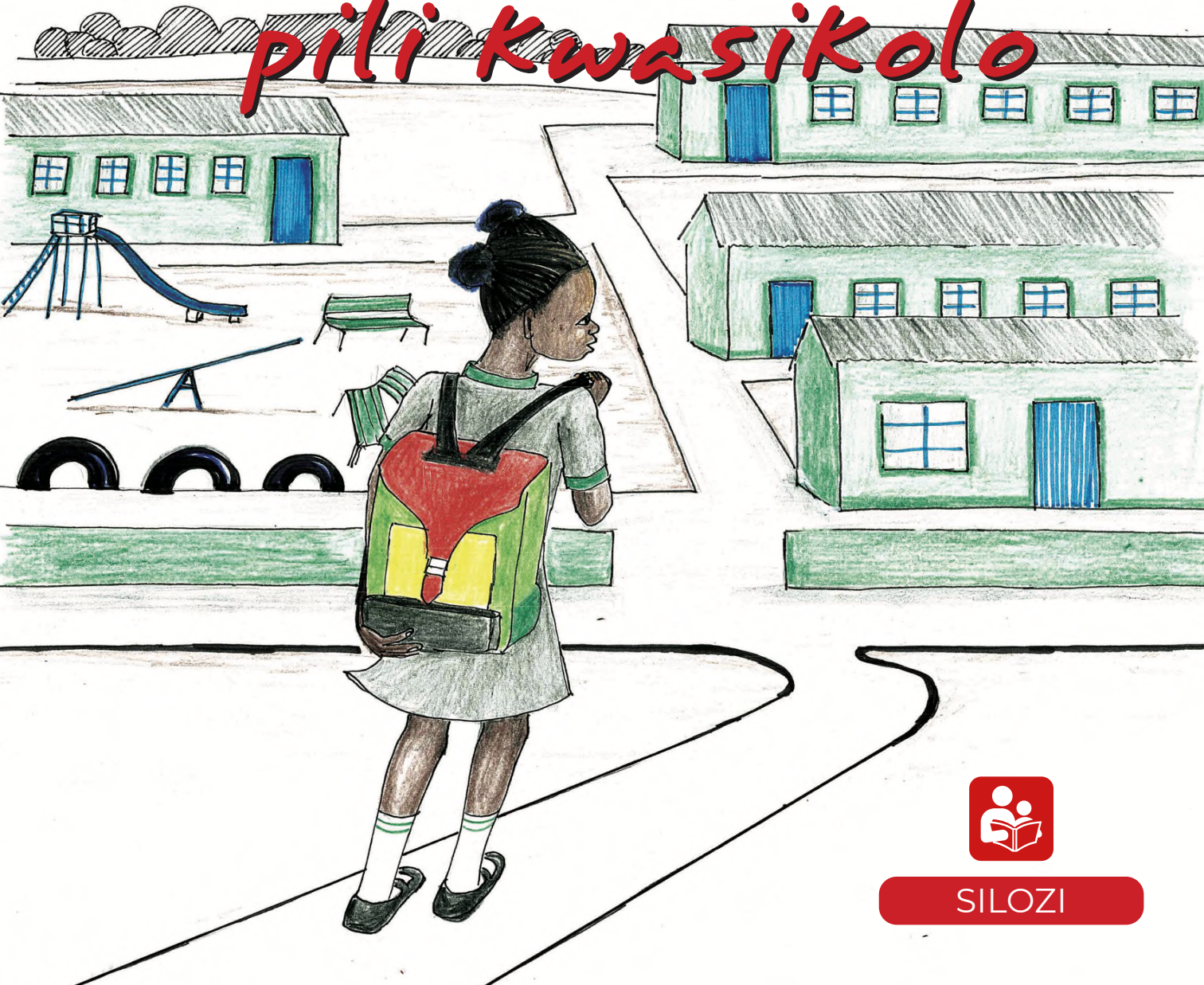


# Lizazi la Lena la pili kwasi kolo



SILOZI

This book belongs to:

---



# Lizazi la Lena la pili kwasikolo

**Title:** Lizazi la Lena la pili kwasikolo

**Author:** Hilma Weber

**Illustrations:** Shiya Karuseb

**Translated by:** Michelle Kambinda & Winnie Kambinda

**Layout and design:** John Meinert Printing

**Publisher:** Development Workshop Namibia

20 Nachtigal Street

P O Box 40723, Ausspannpaltz

Windhoek, Namibia

**Printed by:** John Meinert Printing

**ISBN:** 978-99945-58-48-3

**Copyright:** *All rights reserved by Development Workshop Namibia. School children and teachers can make copies and use this book in schools. This book and /or its content may not be reproduced or copied for commercial purposes.*

***The production and printing of this publication is supported by:***





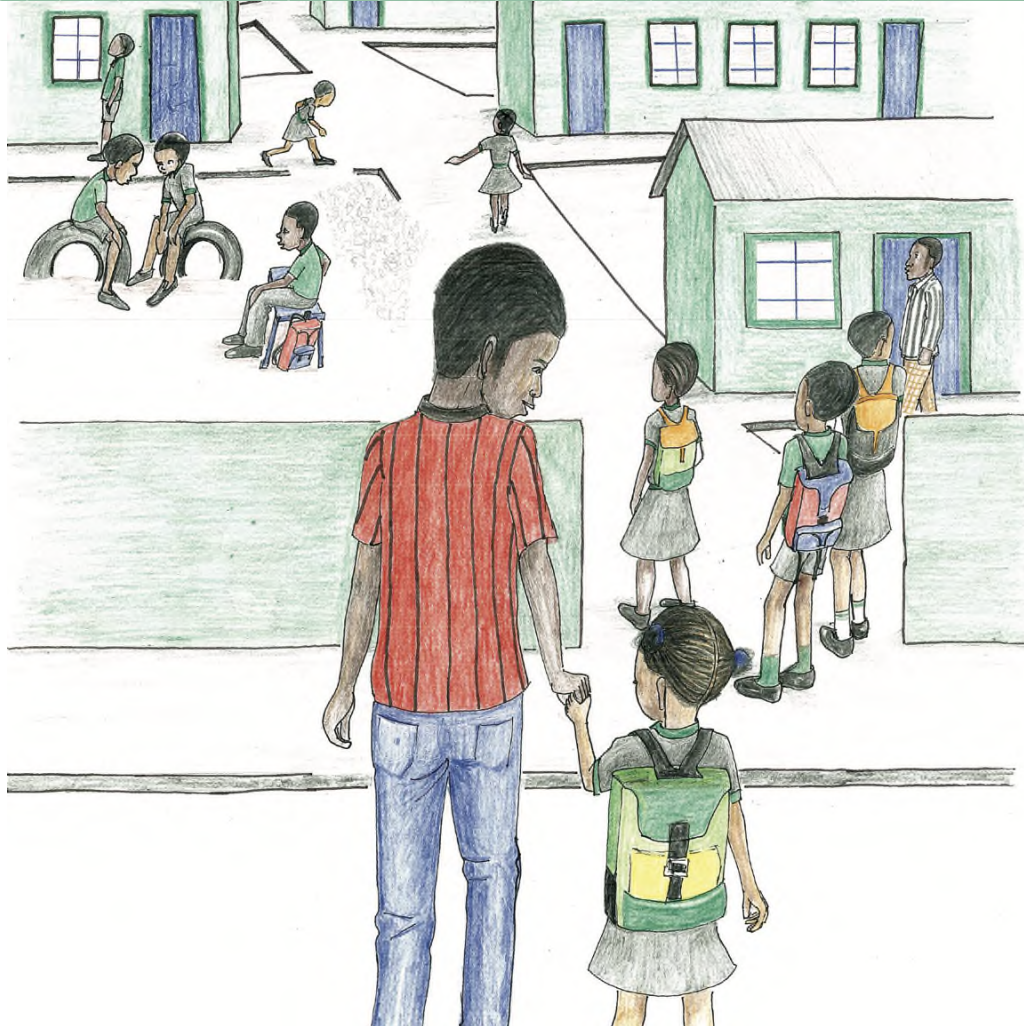
Kachenu ki lizazi le lituna la Lena. Ki lizazi la hae la pili kwasikolo. “Uzuhile, Lena, zuha musizani waka!” ku biza bomahe Lena. Mahe na lukisize buhobe bwa mukushuko bwa Lena. “Ki wo mukushuko wahao, Lena. U tokwa maata alizazi le...” Kwa bulela bomahe



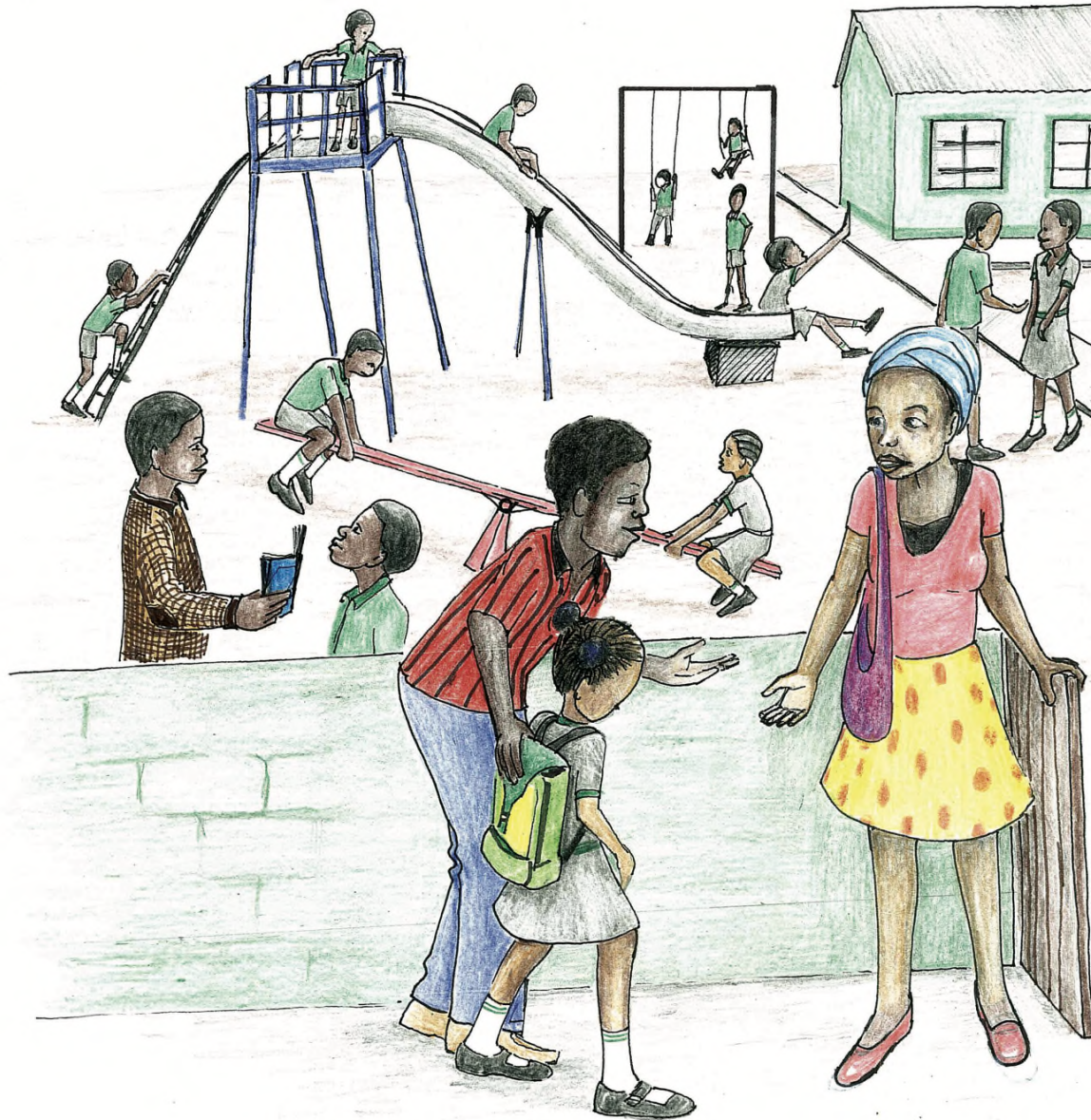
Lena a ca mukushuko wahae ni kunwa tii. A tapa kapili-pili kwasifateo, a kenisa meeno hae ni kutina. Bomahe ba lukisa mukotana wa Lena wa kwasikolo.



Bondatahe ba tusa Lena ni mihala ya makatulo a hae. “U bonahala bunde, musizani waka ya lateha!” Bondatahe ni bomahe ba swala mbando ni kutubeta Lena. Bomahe ba mu laeza ni ku mu a kaleza lizazi le linde la pili kwasikolo. Bondatahe ba zamaya ni ye Lena ku ya kwasikolo.

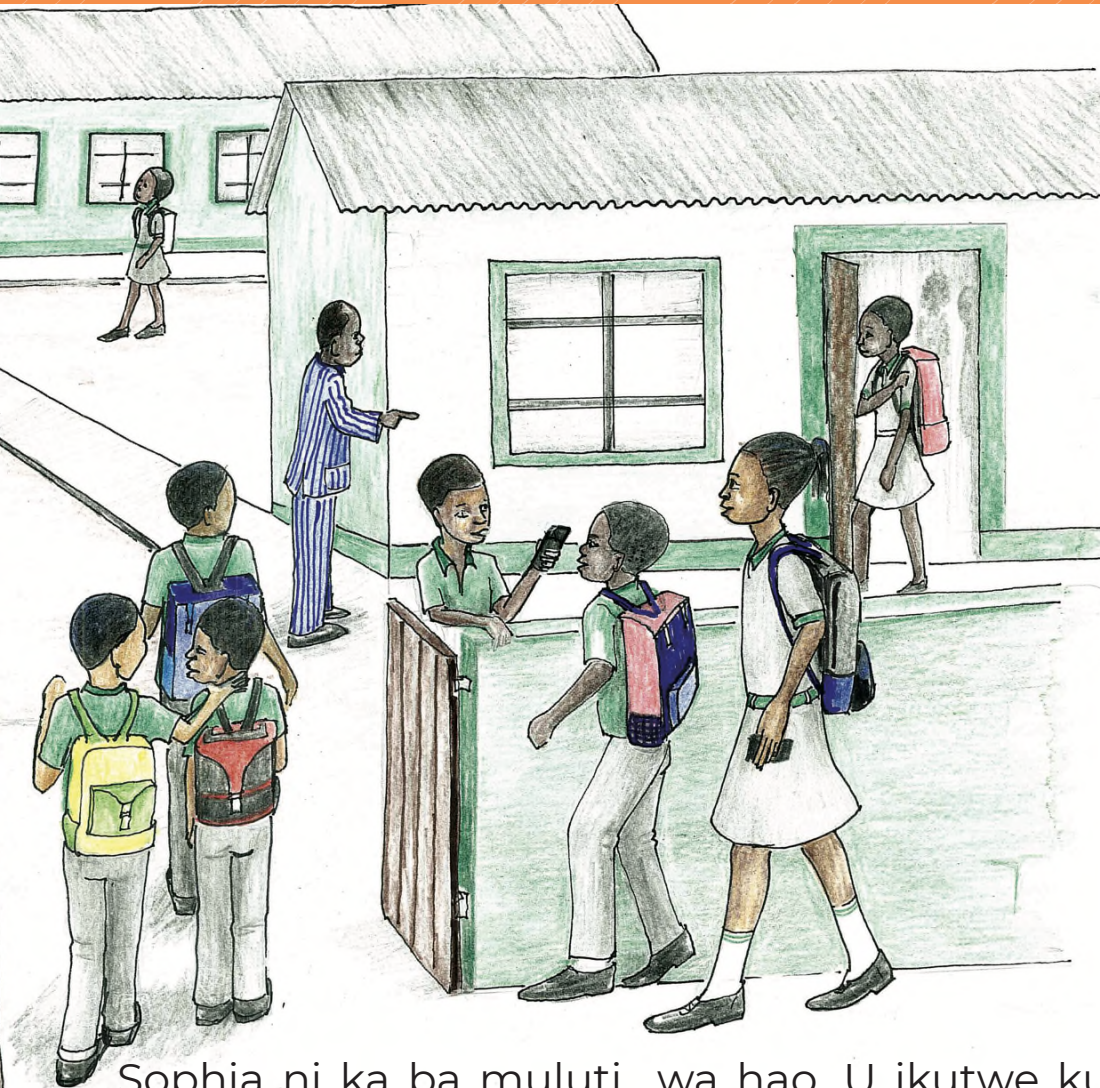


Mwanzila ha nza ya kwasikolo Lena na ikutwa maefe-effe. Na sweli ku hupula batu kaufela ba ba nca ba ka yo kopana ni bona. Bomuluti ni ba bamwi banana. Sa nahana kuli haiba kachenu ne li lizazi la bona ni bona la pili kwasikolo.

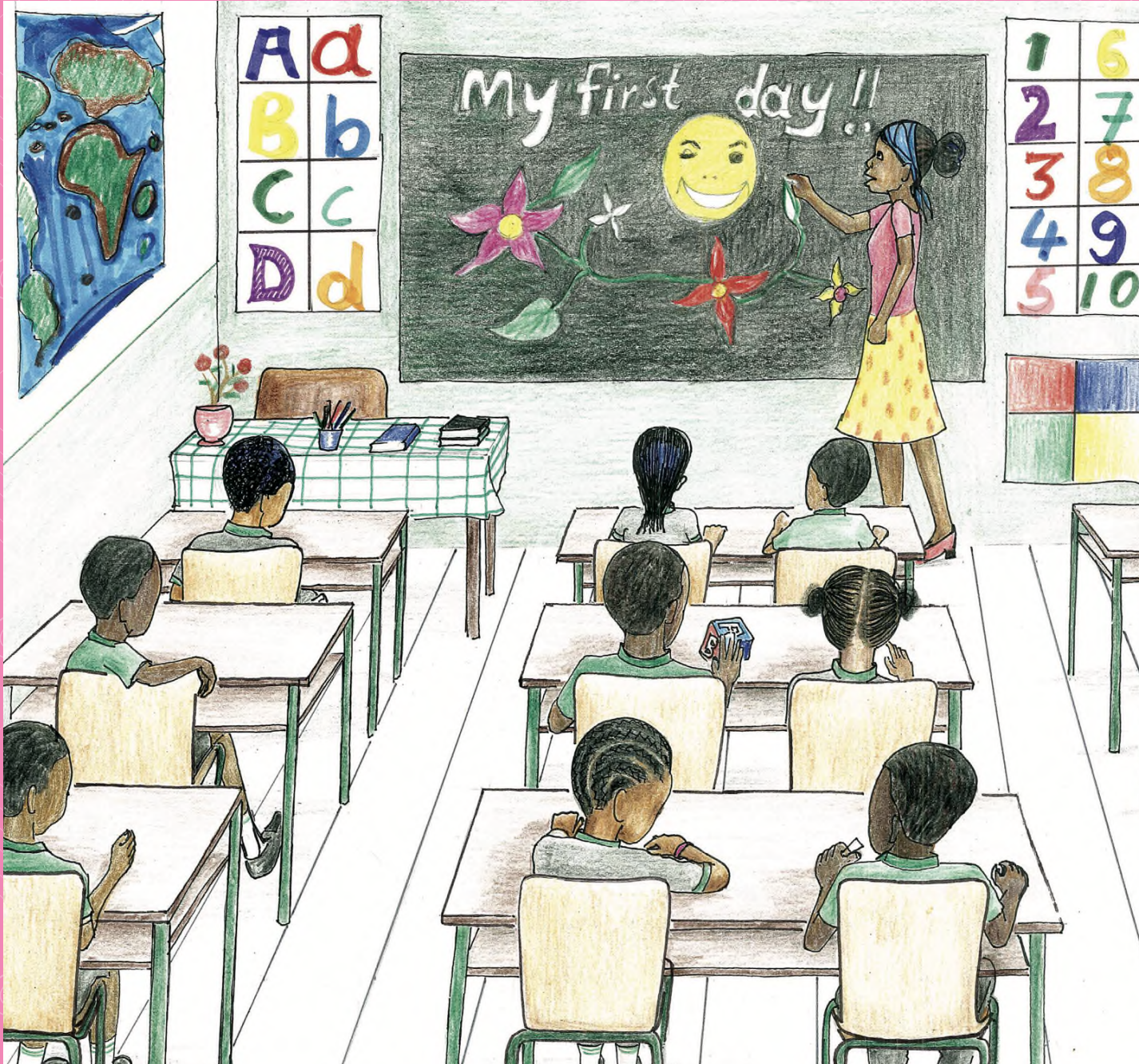


Bomuluti, mufumahali Sophia, ne ba yemi fa munyako.  
“Uzuhile, Lena. Wa amuhelwa! Libizo la ka kina mufumahali





Sophia ni ka ba muluti wa hao. U ikutwe kuamuhelwa fa sikolo. U ka ikola kuituta ni ku kopana ni balikani ba ba nca.” Bondatahe ba swala Lena mwambando, ni ku mu akaleza lizazi le linde.





“Se li hola ya ketalizoho ka to lalu! Ha lu kale lizazi la luna la pili.” Mufumahali Sophia a bizeza Lena ni ba bamwi banana mwa kelele.”

“Muzuhile banana. Libizo la ka kina mufumahali Sophia mi kina muluti wa mina.” Mufumahali Sophia a i zibahaza.

Lena a i ziba ha za; libizo la ka kina Lena mi ni nan i li limo ze ketalizoho ka zepeli. Banana kaufela ni bona ba i zibahaza. Mufumahali Sophia a bulelela banana kuli mwakeleke mo ba kaikola kuituta li ka ze nca.





Ka hola ya bulishumi ne li nako ya kupumula. Lena ni ba bamwi banana ba bapalela fande. Ne ba bile cwalo ni nako ya kuca lico za bona zeo ne ba shimbile kuzwa kwamandu ni kunwa mezi.

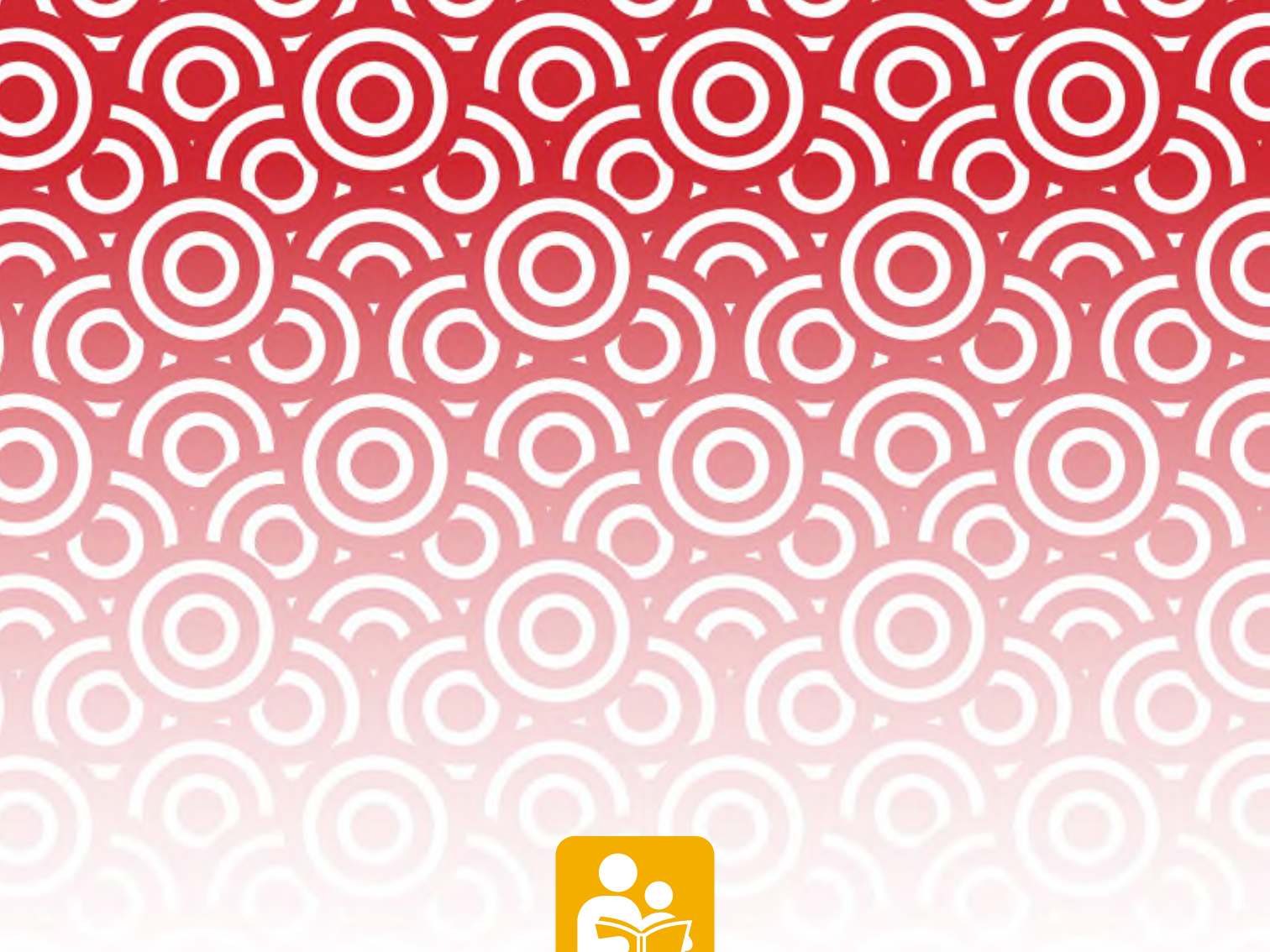
Ka hola ya bulishumi ka to tubeli mufumahali Sophia a li,  
"Se ili nako ya ku ya kwamandu." A itumela kwabanana  
kaufela kwalizazi le linde la pili kwasikolo.

Bomahe ni bondatehe ba amuhela Lena kwandu kasaulaho  
wa kuzwa kwasikolo. Lena a ba bulelela lika kaufela za



lizazi la hae. Mufumahali Sophia ni mwabapalezi ni balikani bahae ba ba nca. Lena na tabile hahulu mi na sa koni ku litela lizazi le li tatama kuli a ye kwasikolo. Bomahe ni bondatahe ne ba tabile kuli Lena u zo ikola lizazi la hae la pili.





Publication is supported by:



ISBN: 978-99945-58-48-3



9 789994 558483